

## RDCPSS

Automatic Transfer Switch

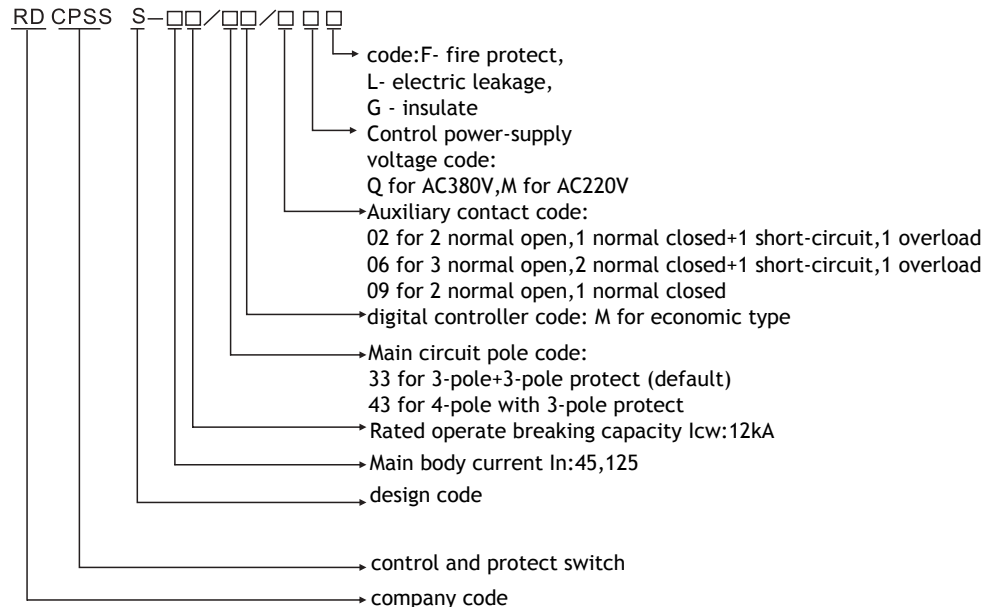


### 1.Application

RDCPSS series ATSE (hereinafter referred to as RDCPSS switch) is applied to 2-way power supply system of AC rated frequency 50Hz or 60Hz, rated voltage up to 690V, rated current from 0.4A up to 125A, it would transfer the power supply manually or automatically when the overvoltage, undervoltage, phase-loss is happening for ensure the reliability and safety of post circuit power-supply.

RDCPSS switch is equipped with instantaneous characterister of contactor, is applied to emergency power supply. And between the power-grids power-supply transfer, it can realize power-off transfer time Min 50ms to improve stability of power. And CB type CPSS switch can be chosen according to each current protect function such as overload, overcurrent, short-circuit, phase-unbalance.

### 2.Application



## RDCPSS

### Automatic Transfer Switch

## 3. Standard

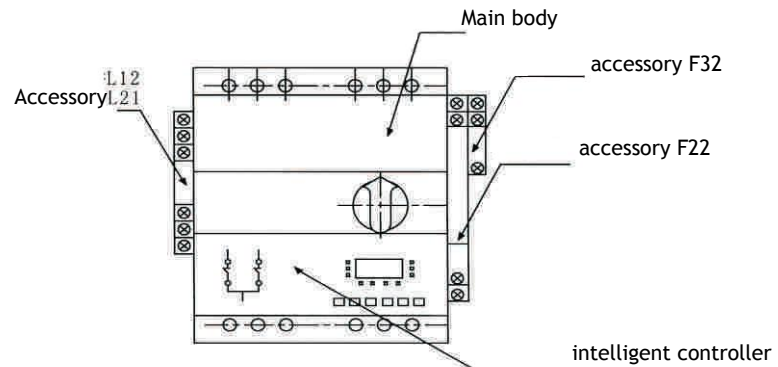
IEC 60947-1:2011,MOD  
IEC 60947-2:2006,IDT  
IEC 60947-4-1:2009 Ed.3.0,MOD  
IEC 60947-6-2:2007,IDT  
IEC 60947-6-1:2013

## 4. Normal operation condition

- 4.1 Ambient air temperature:Max +40°C, Min -10°C, day average temperature shall not exceed +35°C.
- 4.2 Altitude: up to 2000m.
- 4.3 Humidity: Max relative humidity shall not exceed 50% at +40°C, and the higher humidity is acceptable under lower temperature,for instance,it can reach 90% at +20°C.And the condensation caused by temperature change shall be taken care.
- 4.4 Protect level:IP 20, Anti touch finger function
- 4.5 Pollution level:3 level
- 4.6 Install type: Main circuit 380V for IV,Auxiliary circuit and control circuit for III, Alarm circuit for II.

## 5. Structure and characteristic

### 5.1 Function module combination



## RDCPSS

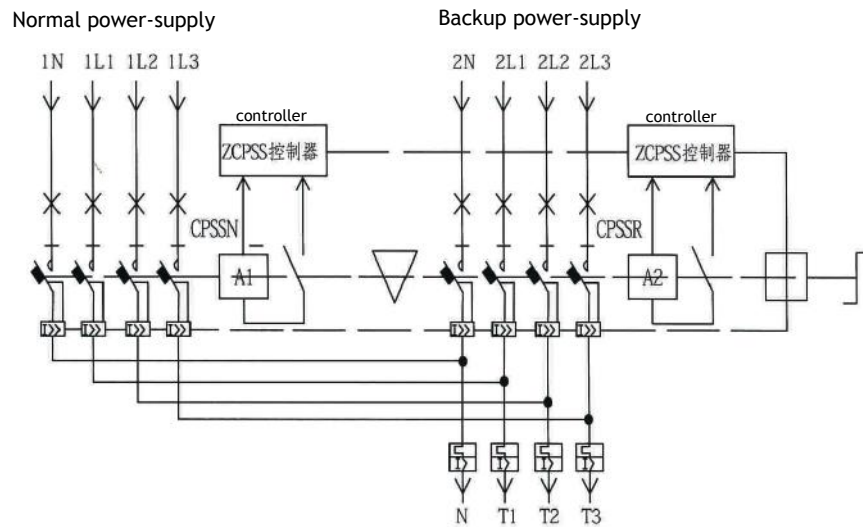
### Automatic Transfer Switch

#### 5.2 RDCPSS switch characteristic

RDCPSS switch consists of Normal power-supply side(RDCPSSN) and Backup power-supply side(RDCPSSR) which are connecting by mechanical interlock and electrical interlock to ensure the stabilizers of switch transfer. RDCPSS switch is controlled by inside intelligent controller,has power-supply 3-phase detection at same time function to detect the faults like voltage-loss,overvoltage,undervoltage,phase-loss,to realize function transfer like self-throw and self-recovery, self-throw and manual recovery, self-throw and no recovery,manual throw and self recovery,manual throw and no recovery,manual throw and manual recovery.

According to special requirement,the protect function for current overload,motor stall ,short-circuit,3-phase unbalance can be added to form the CB type ATS equipment.

#### 5.3 RDCPSS switch electric principle diagram



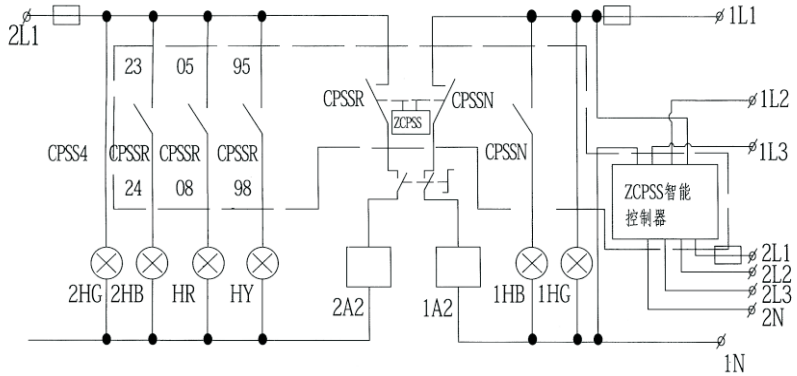
Note:CPSSN connect Normal power-supply,CPSSR connect Backup power-supply. ZCPSS controller is electronic part.

# RDCPSS

## Automatic Transfer Switch

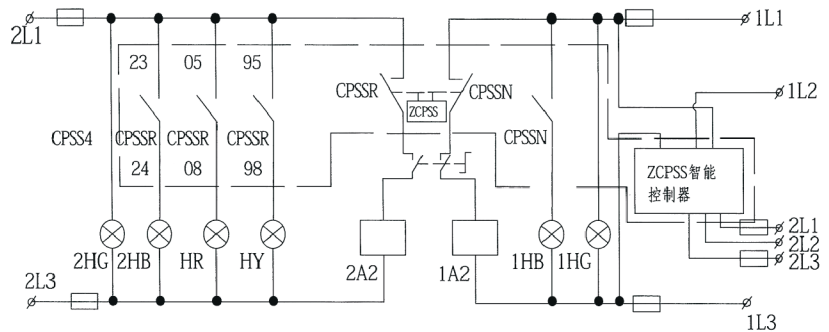
### 5.4 RDCPSS control(self-throw and self recovery,manual throw and self recovery) 4-phase 4-line connect diagram

backup power supply control power	power supply protect	power supply signal	backup power supply operate	signal alarm		Backup breaker	General on-off state	Main breaker	Normal power supply operate	power signal	power supply protect	normal power supply control power	Main power and backup power Input
				short-circuit	fault								



### 5.5 RDCPSS control(self-throw and self recovery,manual throw and self recovery) 3-phase 3-line connect diagram

backup power supply control power	power supply protect	power supply signal	backup power supply operate	signal alarm		Backup breaker	General on-off state	Main breaker	Normal power supply operate	power signal	power supply protect	normal power supply control power	Main power and backup power Input
				short-circuit	fault								

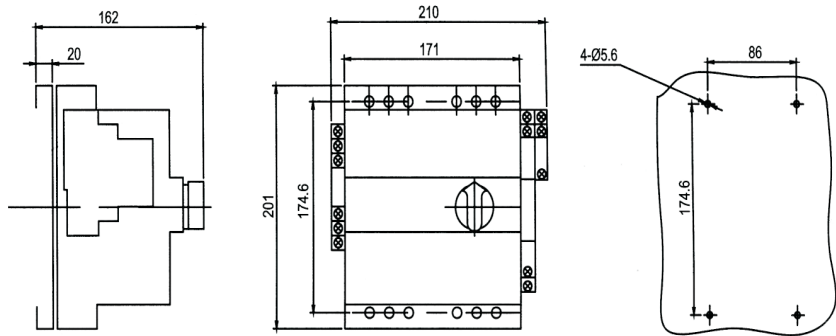


## RDCPSS

Automatic Transfer Switch

### 6. Shape and install dimension

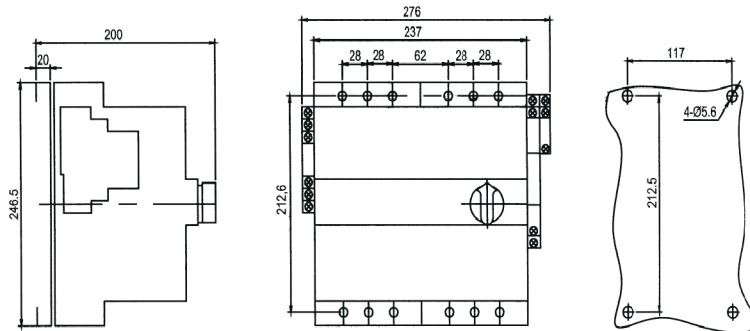
#### 6.1 RDCPSS-45 shape install dimension



RDCPSS-45 shape dimension

RDCPSS-45 install dimension

#### 6.2 RDCPSS-125 shape install dimension



RDCPSS-125 shape dimension

RDCPSS-125 install dimension

## RDCPSS

### Automatic Transfer Switch

---

## 7. Notice

---

Please Note the Model No., Main frame rated current, electronic controller rated current, auxiliary contact.